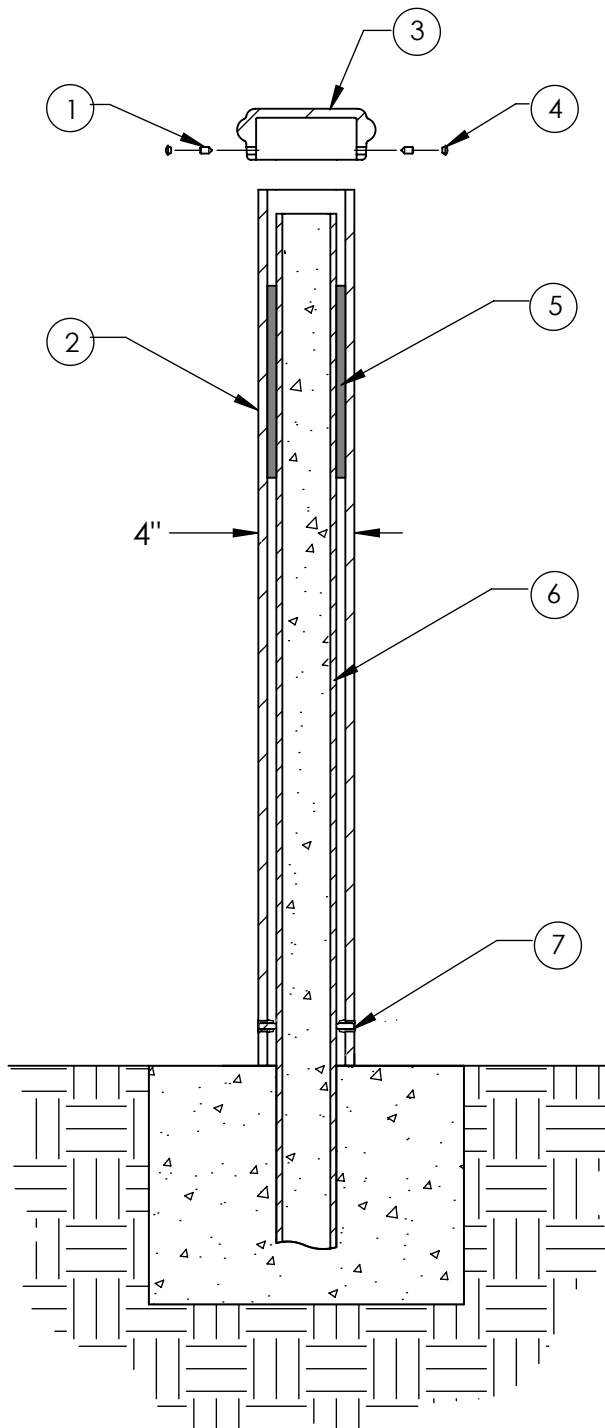


Type P - Pipe Mount

Series: Township

Product Number: 200-TP



ITEM	QTY	PART	WEIGHT
1	2	3/8" S.S. cap set screws.	3.7 g. ea.
2	1	4" x 4" HSS tube steel bollard cover.	51.5 lbs.
3	1	4"x4" cast Iron cap	6.6 lbs.
4	2	Plastic screw caps.	.18 g. ea.
5	4	Neoprene foam spacer strips.	13.2 g. ea.
6	1	2.5" x 2.5" HSS inner tube steel pipe.	34.4 lbs.
7	2	3/8" S.S. bollard set screws.	1.32 g. ea.

-Steel bollard sleeves over existing interior concrete-embedded pipe. Bollard is fastened to interior pipe with S.S. set screws.

-Footer detail is for reference only; proper footer construction depends on local soil conditions and engineering requirements.