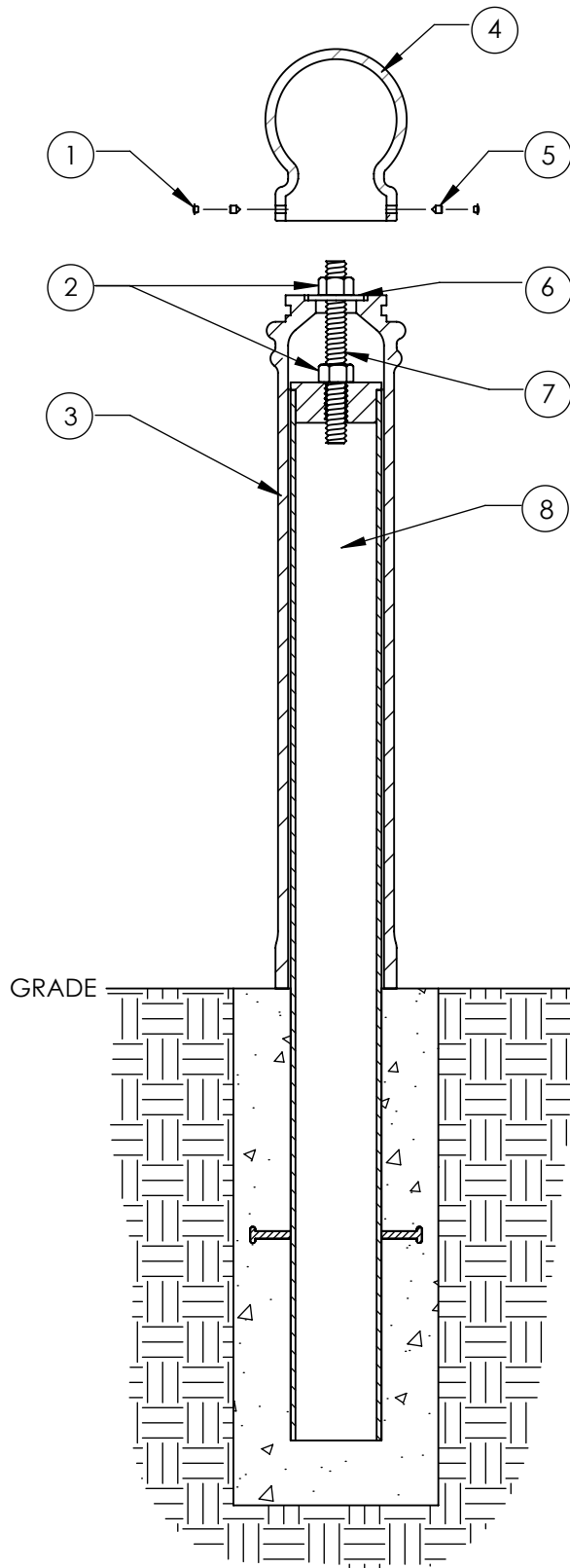


# Type P - Pipe Mount

Series: Broadway

Product Number: 160-GPF



ITEM	QTY	PART	WEIGHT
1	2	Plastic screw caps.	.18 g. ea.
2	2	1" Stainless steel nuts.	.34 lbs. ea.
3	1	Cast Iron flute B1 body.	83.6 lbs.
4	1	Cast Iron globe bollard top.	20.1 lbs.
5	2	3/8" Stainless steel set screws.	3.7 g. ea.
6	1	1" Stainless steel washer.	.36 lbs.
7	1	9"-Long 1" dia. stainless steel all-thread.	1.64 lbs.
8	1	4" Sched. 40 steel pipe with threaded plug.	54.6 lbs.

-Install interior pipe according to engineering requirements, screw threaded rod into threaded plug on top of pipe, tighten 1" nut onto washer securing bollard in place, then use set screws to secure globe top on tightly.

-Footer detail is for reference only; proper footer construction depends on local soil conditions and engineering requirements.