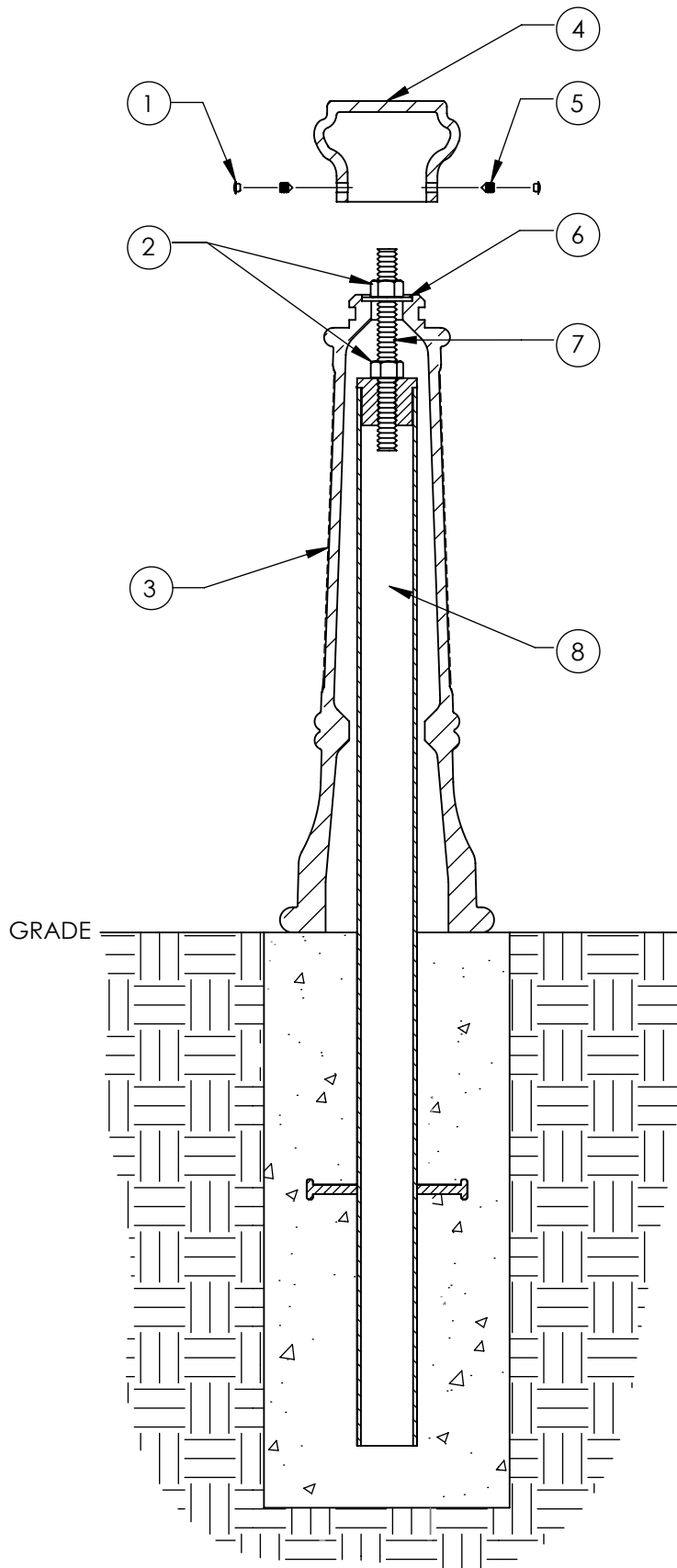


Type P - Pipe Mount

Series: Promenade

Product: 100 - RSF



| ITEM | QTY | PART | WEIGHT |
|------|-----|---|-------------|
| 1 | 2 | Plastic screw caps. | .18g ea. |
| 2 | 2 | 3/4" Stainless steel nuts. | .14lbs. ea. |
| 3 | 1 | Cast iron step flute pedestal. | 65.6 lbs. |
| 4 | 1 | Cast iron small round top. | 7.9 lbs. |
| 5 | 2 | 3/8" Stainless steel set screws. | 3.7 g ea. |
| 6 | 1 | 3/4" Stainless steel washer. | .11 lbs. |
| 7 | 1 | 8"-long 3/4" dia. stainless steel all-thread. | .8 lbs. |
| 8 | 1 | 2" Sched. 40 Steel pipe with threaded plug. | 14.5 lbs. |

-Install interior pipe according to engineering requirements, screw threaded rod into threaded plug on top of pipe, tighten 3/4" nut onto washer securing bollard in place, then use set screws to secure round top on tightly.

-Footer detail is for reference only; proper footer construction depends on local soil conditions and engineering requirements.