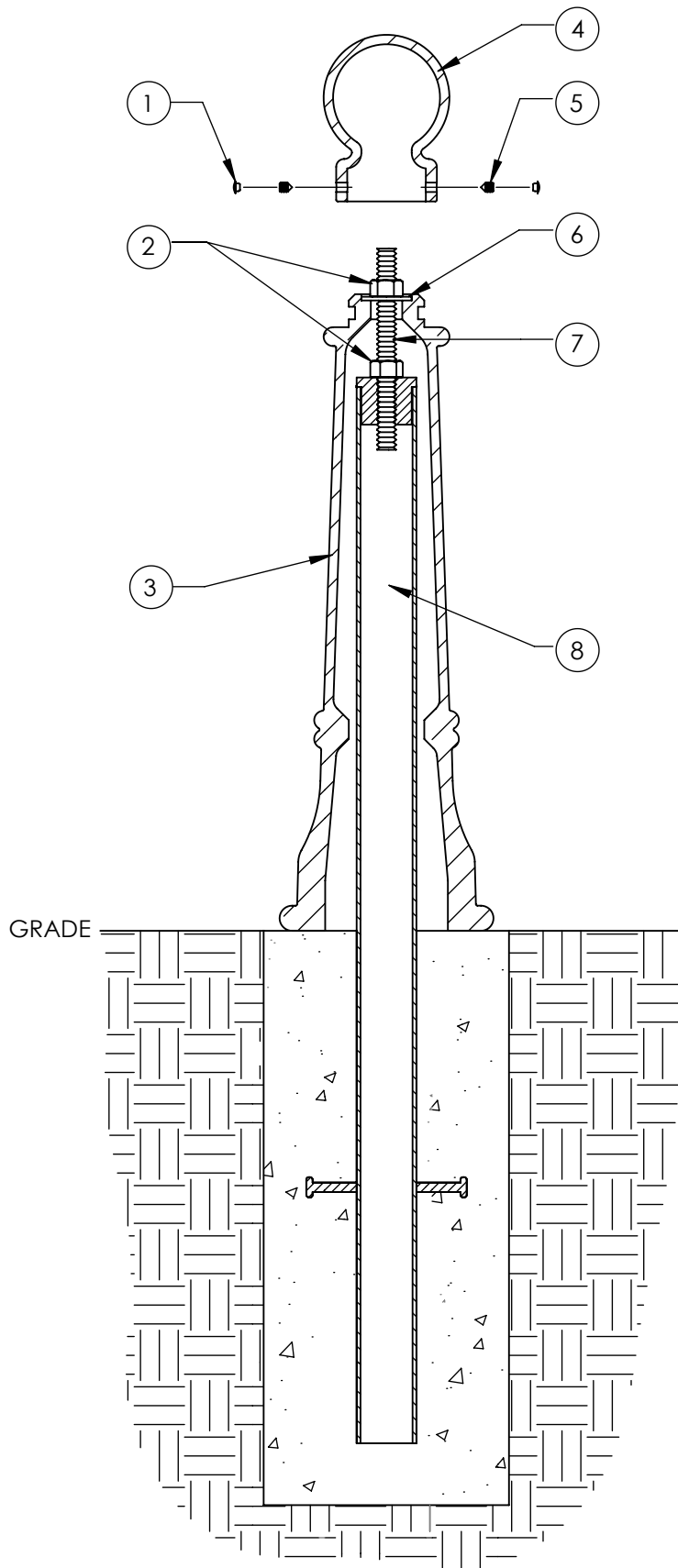


Type P - Pipe Mount

Series: Promenade

Product: 100 - GS



ITEM	QTY	PART	WEIGHT
1	2	Plastic screw caps.	.18g ea.
2	2	3/4" Stainless steel nuts.	.14lbs. ea.
3	1	Cast iron step plain pedestal.	60.6 lbs.
4	1	Cast iron small globe top.	8.8 lbs.
5	2	3/8" Stainless steel set screws.	3.7 g ea.
6	1	3/4" Stainless steel washer.	.11 lbs.
7	1	8"-long 3/4" dia. stainless steel all-thread.	.8 lbs.
8	1	2" Sched. 40 Steel pipe with threaded plug.	14.5 lbs.

-Install interior pipe according to engineering requirements, screw threaded rod into threaded plug on top of pipe, tighten 3/4" nut onto washer securing bollard in place, then use set screws to secure globe top on tightly.

-Footer detail is for reference only; proper footer construction depends on local soil conditions and engineering requirements.