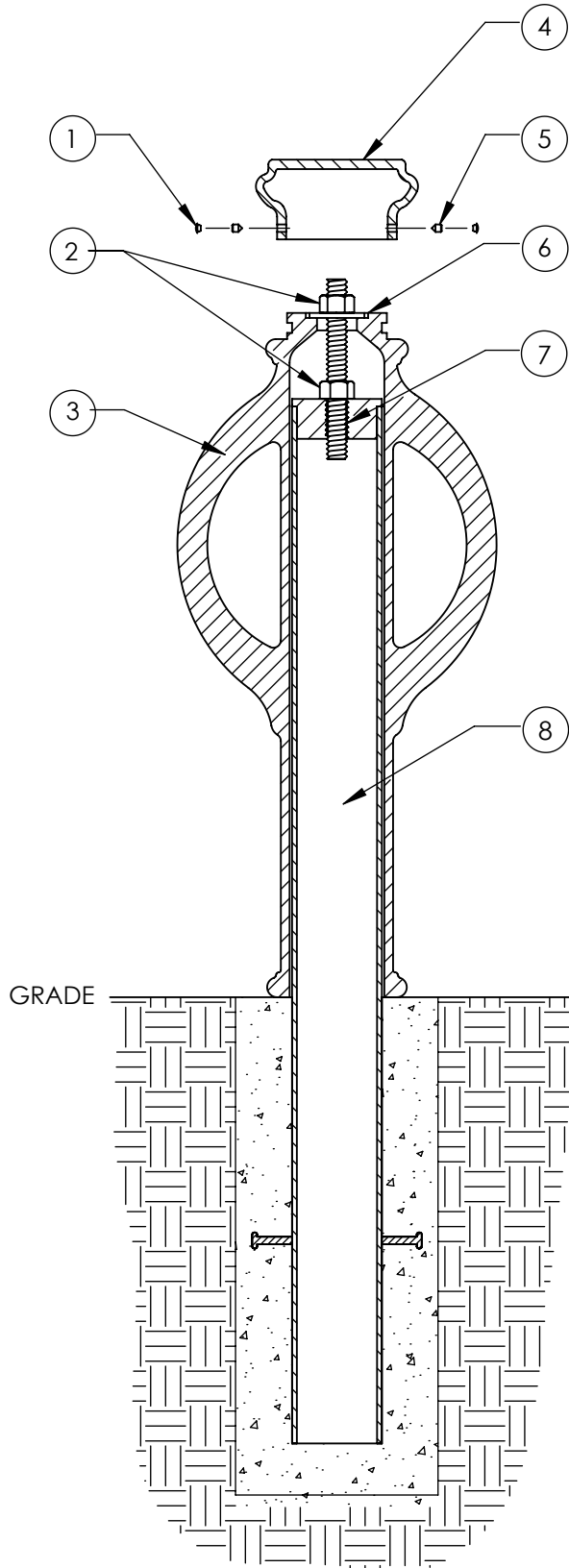




Type P - Pipe Mount

Series: Velocity

Product Number: 160-GB2



| ITEM | QTY | PART | WEIGHT |
|------|-----|--|--------------|
| 1 | 2 | Plastic screw caps. | .18 g. ea. |
| 2 | 2 | 1" Stainless steel nuts. | .34 lbs. ea. |
| 3 | 1 | Cast Iron plain B2 bollard body. | 120 lbs. |
| 4 | 1 | Cast Iron round bollard top. | 13.6 lbs. |
| 5 | 2 | 3/8" Stainless steel set screws. | 3.7 g. ea. |
| 6 | 1 | 1" Stainless steel washer. | .36 lbs. |
| 7 | 1 | 9"-Long 1" dia. stainless steel all-thread. | 1.64 lbs. |
| 8 | 1 | 4" diameter sched. 40 steel pipe, 48" length, with threaded plug attached. | 54.6 lbs. |

-Install interior pipe according to engineering requirements, screw threaded rod into threaded plug on top of pipe, tighten 1" nut onto washer securing bollard in place, then use set screws to secure round top on tightly.

-Footer detail is for reference only; proper footer construction depends on local soil conditions and engineering requirements.